



 <p><b>South East European Open Optimist Cup</b></p>	
 <p><b>SPORT I OMLADINA VOJVODINE</b> SPORT AND YOUTH OF VOJVODINA</p>		

# SEEEOOC

## South East European Open Optimist Cup

May 9<sup>th</sup> – 11<sup>th</sup> 2024, Lake Palić, Serbia

## Sailing Instructions

### HONOURABLE COMMITTEE

Skala Srđan, Predsednik Jedriličarskog saveza Srbije  
 Nataša Aleksić, Grad Subotica  
 Dejan Vuković, Sportski Savez Subotice  
 Atila Kikić, Sportski Savez Subotice  
 Marta Dobo, PUC „Palić-Ludaš“  
 Božidarka Golubović, Turistička organizacije grada Subotice

### ORGANIZING COMMITTEE

Davor Andrašić, Predsednik JK Palić  
 Dejan Zakić, Predsednik Uprave JK Palić  
 Viktor Harangozo  
 Đlakić Ranko  
 Andrea Bešić

### INTERNATIONAL JURY

Miroslav Bjelajac, IJ (CRO)  
 Dragomir Andonović, IJ (SRB)  
 Tamas Szalontai (NJ HUN)  
 Cristian Tabacu, NJ (ROU)  
 Slobodan Golubovski, NJ (SRB)

### RACE COMMITTEE

Dragan Knežević, NJ (SRB)  
 Srđan Volarević, J (SRB)  
 Andrea Kikić, App. J (SRB)  
 Dejan Radovanović, App. J (SRB)  
 Andreja Kikić, P (SRB)

### MEDICAL CARE

Dom zdravlja Palić

## **1 Rules**

- 1.1 The regatta will be governed by the 'rules' as defined The Racing Rules of Sailing.
- 1.2 Appendix P and T will apply.
- 1.3 ERS apply in full version. Current Optimist class rules will apply.
- 1.4 National prescriptions will not apply.
- 1.5 If there is a conflict between languages the English text and these Sailing Instructions will prevail.

## **2 Entries**

- 2.1 The regatta is open to all boats of Optimist class. Eligible competitors shall be verified members of their National Authorities and their National Class Associations if exists. Eligible boats shall be entered by completing registration with the organizing authority and shall possess valid measurement certificate.

## **3. Notices to Competitors**

- 3.1 Notices to competitors will be posted on the official notice board located in front of the Sailing Club Palić. Omission to follow notices on notice board is sole competitor's responsibility.

## **4 Changes in Sailing Instructions**

- 4.1 Any change in the sailing instructions will be posted one hour before it will take effect, except that any change to the schedule of races will be posted before 19:00 hours on the day before it will take effect.

## **5 Signals Made Ashore**

- 5.1 Signals made ashore will be displayed at signal pole in front of the Sailing Club Palić.
- 5.2 When flag AP is displayed ashore '1 minute' is replaced with 'not less than 30 minutes' in race signal AP.

## **6 Signals Made Afloat**

- 6.1 Flag "F" at the finishing line means: "The next race start will be given after finish of the race in course".

## **7 Schedule of races**

- 7.1 9 races are scheduled. Warning signal of the first race is scheduled at 10:55 hours on Friday, May 9<sup>th</sup> 2024. Following races times will be announced by race committee boat or by the notice board.
- 7.2 There will be no more than 4 races per day.
- 7.3 No warning signal will be made after 16:00 hours on Sunday, May, 11<sup>th</sup>.2024.
- 7.4 If more than 90 boats of Optimist class enter the regatta, they will be divided in groups as follows: boats will be added and sorted according the alphabetical order of national letters, and within national letter by the sail numbers. Groups will be given to the boats on complete sorted list as follows: 1, 2, 3, 4, 4, 3, 2, 1, etc. Each race will consist of two heats; each heat will consist of two groups. Each boat will be given ribbon in the color, which she must display during the regatta for groups as follows:

Group	Ribbon
BLUE	Blue ribbon
RED	Red ribbon
GREEN	Green ribbon
YELLOW	Yellow ribbon

- 7.5 Races are scheduled as follows:

Race	Heat 1	Heat 2
Race 1	Blue - Red	Green - Yellow
Race 2	Red - Yellow	Blue - Green
Race 3	Blue - Yellow	Red - Green
Race 4	Green - Yellow	Blue - Red
Race 5	Blue - Green	Red - Yellow
Race 6	Red - Green	Blue - Yellow

And so on.

## **8 Class flag**

- 8.1 Class flag will be white flag with class insignia.
- 8.2 If SI 7.4 applies, class flags will be colored flags corresponding to the groups.

## **9 The Course**

- 9.1 The diagram in attachment 1 shows the course, the order in which each mark are to be rounded or passed, and the side on which each mark is to be left.

## **10 Marks**

- 10.1 Marks 1, 2P, 2S, 3, 4P and 4S will be yellow buoys. Finishing mark (Mark F) will be orange buoy.
- 10.2 Any replacement mark will be an orange buoy.

## **11 The Start**

- 11.1 Races will be started by using RRS 26.
- 11.2 The starting line will be between staffs on the RC boats displaying an orange flag.
- 11.3 A boat starting later than 4 minutes after her starting signal will be scored DNS without hearing. This changes rules 35, A4 and A5.1.
- 11.4 Boats whose warning signal has not been made shall avoid the starting area during the starting sequence for other races. [DP]

## **12 The Finish**

- 12.1 The finishing line will be between the course side of finishing mark (mark F) on port side and staff displaying a blue flag on a RC boat on starboard side.

## **13 Time Limit**

- 13.1 There is no time limit for first boat. Boat failing to finish within 20 minutes after the first boat of her class will be scored DNF. This changes rules 35, A4 and A5.1.

## **14 Protests**

- 14.1 In addition to the RRS 60.2(a) a boat that intends to lodge a protest shall approach IMMEDIATELY after finish the race committee boat on finish by its starboard side and inform race committee about her protest and against whom the protest will be lodged. The competitor must then wait till the verbal acknowledgment is given.
- 14.2 Protests shall be written on forms available at the race office and delivered there within the protest time limit, which is one hour after finishing of the last boat in the last race of the day.
- 14.3 Protest notices will be posted within 15 minutes of the protest time limit to inform competitors where and when there is a hearing in which they are parties to protest or named as witnesses.
- 14.4 After posting schedule of hearing, arbitration procedure will begin according to appendix T.
- 14.5 Boat's score taking scoring penalty after finish will be 30% applying rule 44.3(c).
- 14.6 A list of boats that have been penalized under Appendix P on the water or have been disqualified by the jury will be posted on the Official Notice Board.
- 14.7 Decision of the jury will be final as provided in rule 70.3(a). International Jury may impose penalties less than DSQ at it's discretion. The Graded penalty system (Appendix 2) will apply (IODA recommendation).

## **15. Scoring**

- 15.1 The Low point scoring system of Appendix A will apply.
- 15.2 Three races have to be completed to constitute a series.
- 15.3
  - (a) When 3 races have been completed boats total score will be the sum of her scores for all races.
  - (b) When 4 to 7 races have been completed boats total score will be the sum of her scores for all races excluding her worst score.
  - (c) When 8 or more races have been completed boats total score will be the sum of her scores for all races excluding her two worst scores.
- 15.4 If SI 7.4 applies, first sentence of rule A5.2 is replaced with "A boat that did not start, did not finish, retired or was disqualified shall be scored points for the finishing place one more than the number of boats in largest fleet".

## **16. Penalty System**

- 16.1 Appendix P will apply.
- 16.2 Jury boats will display white flag with black text "IJ".

## **17 Support Boats**

- 17.1 Special coach boat regulations will apply (Appendix 1).

## **18 Prizes**

- 18.1 Prizes will be as state in Notice of Race.

## **19. Disclaimer of Liability**

- 19.1 Competitors participate in the regatta entirely at their own risk. See rule 3, Decision to Race. The organizing authority will not accept any liability for material damage or personal injury or death sustained in conjunction with or prior to, during, or after the regatta.

## **20 Media Rights**

- 20.1 All competitors, owners of boats and his guests give Organizers all rights for photos, videos of persons and boats before, during and after regatta in media inclusive publicity & press materials for all Organizers activity.

## Attachment 1 – The course

**Course: Start – 1 – 2s/2p – 1– 3 – F – 4s/4p - Finish**

**Marks 1, 3 & F to be left to port.**

**Marks 2s & 2p; 4s & 4p will be gate marks**

Boats going downwind on the leg 3 – 4s/4p  
must not cross the finishing line.



# APPENDIX 1

## SPECIAL COACH BOAT REGULATIONS

### 1. GENERAL

- 1.1 An alleged breach of any of these regulations may be referred to the jury for a hearing. As a result of the hearing, the jury may withdraw accreditation and access rights to the regatta venue and the course areas from the offending party without the option of replacement during the regatta.
- 1.2 Team leaders, coaches and other support personnel are reminded that a competing boat will be disqualified for receiving help in breach of racing rule 41, Outside Help.
- 1.3 The organizing authority may change these regulations at any time. Changes will be posted on the official notice board and circulated to the team leaders.
- 1.4 The organizing authority may, at its discretion, refuse coach boats not deemed to be suitable. Generally, open boats with more than 4 meters and less than 7.5 meters in length and having minimum or no superstructure (cabin, coach house, bridge, etc.) are considered suitable.
- 1.5 No item carried on board a support boat shall protrude over the stern, bow or sides of the boat.
- 1.6 Coach boats shall be registered at Race Office during registration time.
- 1.7 When not in use, coach boats shall be berthed in their allocated places.
- 1.8 Coach boats shall not use the dinghy launching ramps for any purpose, including mooring, and loading and unloading of equipment, except launching and retrieval of the boat.

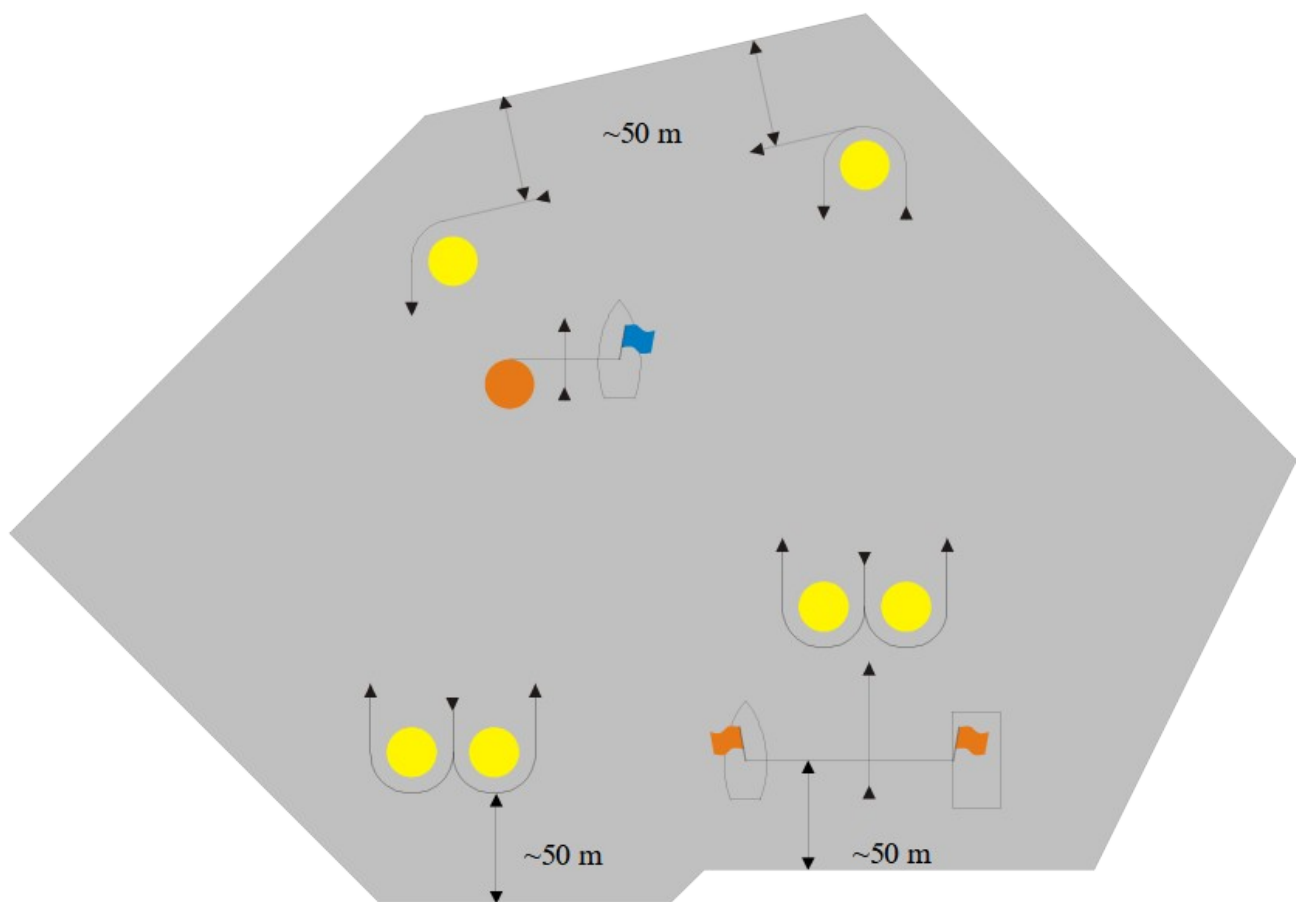
### 2. COMPETITION

- 2.1 The registered driver(s) of a support boat will be responsible for the control of the boat at all times and will be held responsible for any inappropriate behavior, dangerous actions or improper practices affecting the fairness of competition.
- 2.2 Coach boats shall not leave any device, piece of equipment, buoy, marker or similar item permanently in the water. Temporary use of floating objects is allowed for current measurement. These objects shall be removed as soon as the measurement has been taken. In case this regulation is broken, and in addition to any penalty, any item left in the water may be removed.
- 2.3 Support persons shall stay outside areas where boats are racing from the time of the preparatory signal for the first fleet to start until all boats have finished or retired or the race committee signals a postponement, general recall or abandonment. Such areas are defined as follows: not closer than 100 meters to any boat racing (except a boat in distress requiring assistance) or to a mark, layline or rhumbline, and inside the course trapezoid. Until the starting signal coach boats shall be at least 100 meters below the starting line or its extensions. See diagrams below.
- 2.4 Between sequences of races or when all racing for that course area has been postponed or abandoned, coach boats may enter the racing area to service their athletes.
- 2.5 Coach boats should proceed around the race area in a way to minimize the effect of their wake will have on boats racing.

### 3 SAFETY

- 3.1 Coach boats shall carry on board:
  - Adequate anchor and tackle for conditions and depth.
  - Tow rope (minimum 15m long and 10mm thick).
  - Engine stop operational and deployable by Kill cord.
  - Knife.
- 3.2 Never exceed maximum plated/certified passenger limits.
- 3.3 It is strongly recommended that the Kill Cord shall be worn at all times while motoring.

# Prohibited area for trapezoid course



## **APPENDIX 2**

### **THE GRADED PENALTY SYSTEM**

The Sailing Instructions provide for penalties for breaches of some specified sailing instructions or class rules to be less than disqualification if the Jury so decides. Obviously, the Jury has full discretion over penalties for breaches of any rule and the decision may range from no penalty to disqualification. However, it is important that there is consistency in exercising this discretion. For this reason, the following guidelines should be observed in assessing penalties. The option to impose a penalty less than DSQ shall not be used when the Jury is satisfied that the breach was deliberate. When the jury is satisfied that the breach was not deliberate its decision on the penalty should be based on the answers to the following questions:

1. Did the breach seriously compromise the fairness of the competition or the safety of competitors or race organizers?
2. Did the boat gain a competitive advantage through her breach?
3. Could the breach bring the sport or the organization into disrepute?
4. Did the breach result in damage or injury?
5. Was the breach repeated?

The following “Graded Penalty System” includes the penalties suggested for the listed breaches; however, any penalties shall exceed any gain from the breach. Number of points for each penalty shall be calculated based on the maximum number of competitors after grouping the two largest divisions.

#### **Minor (Technical) Penalties No penalty for the first offence**

- Additional identification (division colored ribbons and/or sail stickers) if applied but failed to stay in place.

#### **Penalty approximately equal to 5% of fleet.**

- Avoiding starting area if entered due to a navigational error.
- Failure to comply with sailing instructions for support boats.
- Failure to comply with sailing instructions for trash disposal (to be deleted – rule 55 cover this).
- Failure to comply with sailing instructions for boat’s assigned places.
- Failure to report damage to Charter boat.
- Failure to comply with requirement to report penalty taken or retirement.
- Failure to comply with safety regulations if no danger was involved.

#### **Intermediate Penalties Penalty equivalent to 10% of fleet**

- Bailer/paddle/centreboard/painter not attached to boat (Class Rule 4.3).
- Whistle not attached to lifejacket (CR 4.2).
- Mast not tied in (CR 3.5.2.11).
- One sail tie 5mm over the permitted 10mm maximum (CR 6.6.3.4).
- Two sail ties 3mm over the permitted 10mm maximum (CR 6.6.3.4).
- Accidental loss of sail tie (CR 6.6.3.4).
- Sailing across a race in progress before starting or after finishing.
- Repeated minor penalty breach.

#### **Major Penalties Penalty equivalent to 30% of fleet**

- No bailer, paddle or painter in boat (CR 4.3).
- No whistle (CR 4.2).
- No fitting or lanyard to attach mast to hull (CR 3.5.2.11).
- Sail outside limits of bands (CR 3.5.2.7).
- Two ties 5mm over the permitted 10mm maximum (CR 6.6.3.4).
- Three or more ties 3mm over the permitted 10mm maximum (CR 6.6.3.4).
- Throat tack or clew 3mm over the permitted 10mm maximum (CR 6.6.3.4).
- Repeated intermediate penalty breach.

#### **Disqualification (as per RRS)**

- Avoiding starting area: if entered deliberately to gain an advantage.
- Use of unscrutinized equipment.
- Use of unapproved fittings.
- Repeated major penalty breach.
- Additional identification (division colored ribbons and/or sail stickers) deliberately not applied.
- Failure to make request for replacement of equipment.
- Failure to comply with sailing instruction for the on-the-water inspection.